

The Clay Research Group

RESEARCH AREAS

Climate Change ♦ Data Analysis ♦ Electrical Resistivity Tomography
Time Domain Reflectometry ♦ BioSciences ♦ Ground Movement
Soil Testing Techniques ♦ Telemetry ♦ Numerical Modelling
Ground Remediation Techniques ♦ Risk Analysis
Mapping ♦ Software Analysis Tools



Photographs

The Clay Research Group

Aldenham Site



The Aldenham Oak

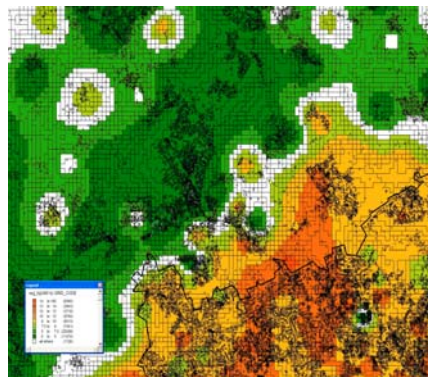
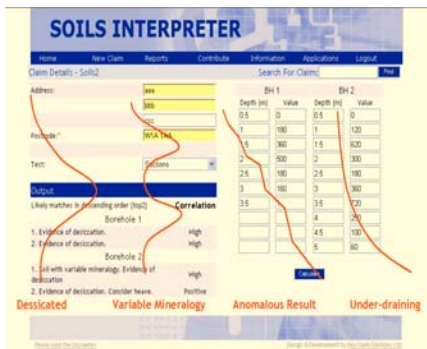
Root Stress Image



Bentonite Soil Test



Soils Interpreter



CRG Geology Grid

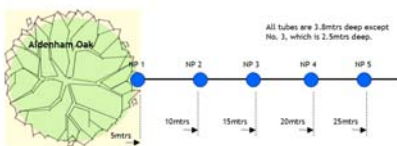
Risk Mapping Using LiDAR



Ground Movement - Willow

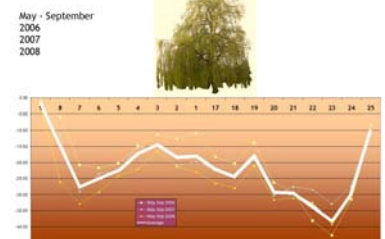
Instrumentation Plan

Neutron Probe Layout - Aldenham Oak

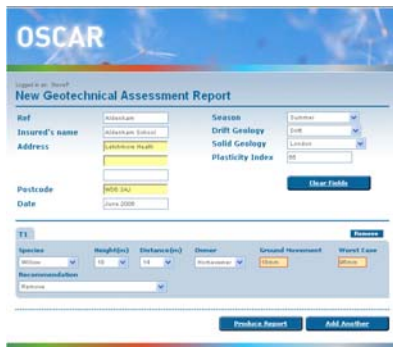


Stress Isochrones

Ground Movement Differences - Willow



Software Applications



JMP and LTOA Visit

Intervention Technique



The Clay Research Group



Neutron Probe - Derek and Joel

Level Covers

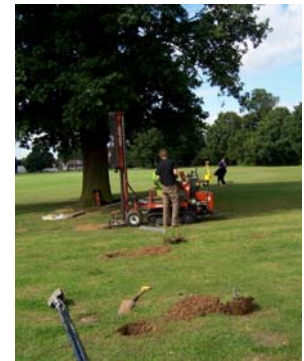


"MatLab Nic" talking to Tim Freeman



Richard, Cyril, Robert, Neil, Glenda ...

Fallen Branch Spring 2007



Mobile rig beside the Aldenham Oak



'Root Radar' Jon Heuch and John Hall

The Weather Station



Gary Strong and Cyril



Jon Gray taking Precise Levels



ERT Array and Cables